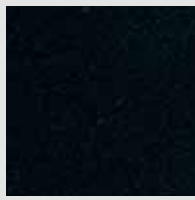
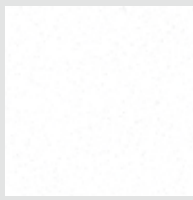


**ACABADOS  
FINISHES  
FINITIONS  
AUSFÜHRUNG**

Lacado · Laquered · Lacqué · Lackiert (Texturizado / Textured / Texturisé / Textur)



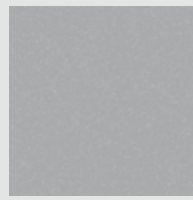
**Black**  
RAL 9005  
n



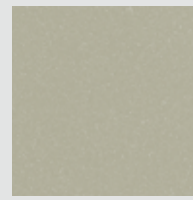
**White**  
RAL 9016  
b



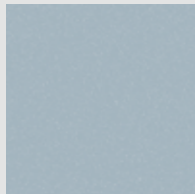
**Anthracite**  
RAL 7016  
G



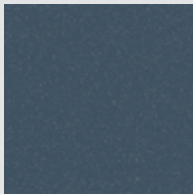
**Grey**  
RAL 7004  
T



**Sand**  
RAL 7032  
2



**Sky**  
PANTONE 5435C  
f



**Ocean**  
PANTONE 7545C  
U



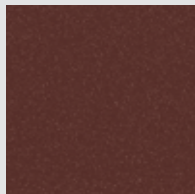
**Navy Blue**  
PANTONE 533C  
g



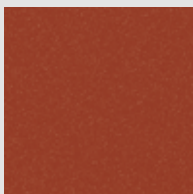
**Olive**  
PANTONE 5753C  
w



**Mustard**  
PANTONE 1245C  
P



**Wine**  
PANTONE 4975C  
z

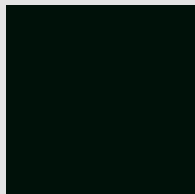


**Teja**  
PANTONE 174C  
d

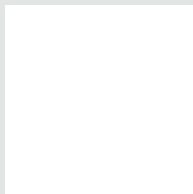
*Blanco, negro y gris en acabado laca brillo: bajo petición específica del cliente /  
White, black and grey in gloss finish: under special request of customer /  
Blanche, noir et gris en finition laque brillante : sur demande spécifique du client /  
Weiss, schwarz and grau glänzend Ausführung: unten besonderer Forderung von Kunden*

Polipropileno · Polypropilene · Polypropylène · Polypropylen

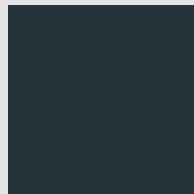
STANDARD COLOURS: Eina, Bio, Global, Ema, Noa, Lottus, Tray, Coma, Oh!, Caddy



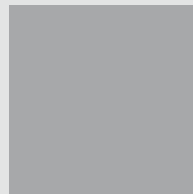
**Black**  
RAL 9005  
PP400



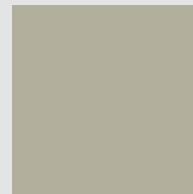
**White (1)**  
RAL 9016  
PP003



**Anthracite (1)**  
RAL 7016  
PP414

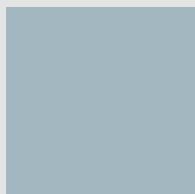


**Grey (1)**  
RAL 7004  
PP017

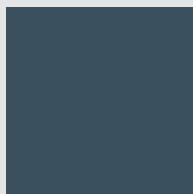


**Sand (1)**  
RAL 7032  
PP015

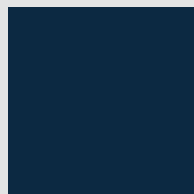
NEW COLOURS: Ema, Noa, Lottus, Tray, Coma, Caddy



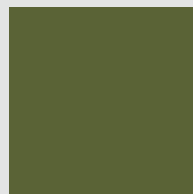
**Sky**  
PANTONE 5435C  
PP032



**Ocean**  
PANTONE 7545C  
PP031



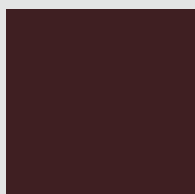
**Navy Blue**  
PANTONE 533C  
PP037



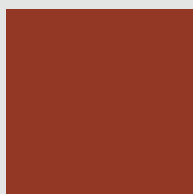
**Olive**  
PANTONE 5753C  
PP033



**Mustard**  
PANTONE 1245C  
PP038



**Wine**  
PANTONE 4975C  
PP035



**Teja**  
PANTONE 174C  
PP036

(1) Exterior & Interior

**FENIX NTM®** Pile, Punto, Lottus, Lottus AL, Iron, LTS System



**B** Blanco con núcleo blanco / White with White color core / Blanche avec coeur blanche / Weiss mit passenden weiss Kernlagen



**N** Negro con núcleo negro / Black with black color core / Noir avec coeur noir / Schwarz mit passenden schwarz Kernlagen

**Madera · Wood · Bois · Holz**

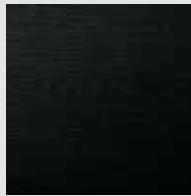
Punto, Iron, Lottus Wood, Lottus Lounge, Lottus Conference, LTS System, Coma\*, Kaiak



**x** (Roble, Oak, Chêne, Eichenholz)

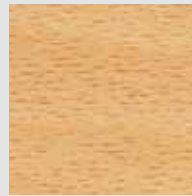


**Y** (Abedul, Birch, Bouleau, Birkenholz)



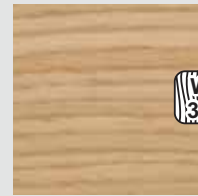
**N** (Roble, Oak, Chêne, Eichenholz)

**Caddy**



**H** (Haya / Beech / Hêtre / Buchenholz)

**Lottus**



**3D449** (Roble, Oak, Chêne, Eichenholz)

\* Coma: Solo x y N / Only x and N / Soulement x et N / Nur x und N

**Noa**

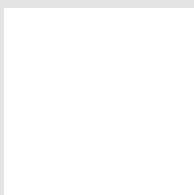


**58** (Abedul, Birch, Bouleau, Birkenholz)

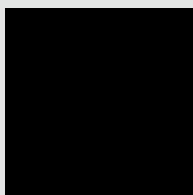


**69** (Abedul, Birch, Bouleau, Birkenholz)

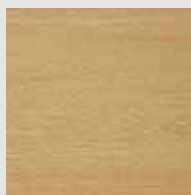
**Melamina · Melamine** Punto, Lottus, Lottus AL, Iron, Folio, Way



**B**

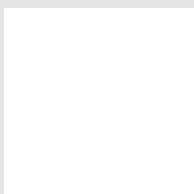


**N**

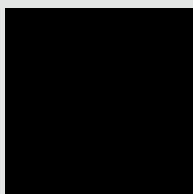


**R** (Roble, Oak, Chêne, Eichenholz)

**HPL COMPACT** Pile, Punto, Lottus, Lottus AL, Iron, Way, LTS System



**B**



**N**



**R** (Roble, Oak, Chêne, Eichenholz)