

HermanMiller

Swoop colour choices

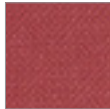


Seat, back and arm upholstery

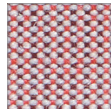
Price Band 2



Main Line Flax
Z1G

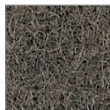


Revive 1
1HJ



Umami
ZUM

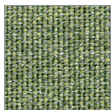
Price Band 3



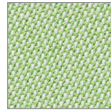
Blazer
Z1A



Hero
ZH1



Remix 2
117



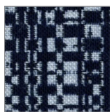
Rime
ZMR

Price Band 5

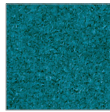


Tweed
111

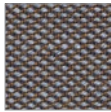
Price Band 6



Accessoire
Z1X



Comfort plus
113



Steelcut Trio 3
116

Price Band 10



Grampian Leather
7F

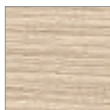
* Not available for use with the Swoop Plywood Chair

** Not available for use with the Swoop Fully Upholstered Chair

*** Available only on the Swoop Ottoman

Chair & ottoman shell

Veneer



Light Ash
BCH



Walnut
OU

Frame/base finishes



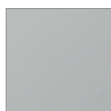
Black
BK



Trivalent Chrome ****
47



Metallic Silver ****
MS



Polished Aluminium ***
CD

**Table
Laminate**



Chalk White
X1

**Table
Veneer**



Walnut
OU

*** Available for use only with the Fully Upholstered Chair/Ottoman/Box Table
**** Available for use only with the Plywood Chair/Ottoman, Coffee/Work Table

For more information, please visit hermanmiller.co.uk or call +44 (0)845 226 7201.