

# ZINTA

---



arper

## Zinta

Graphic, lightweight and fluid, Zinta is a modular sofa system defined by the harmonious juxtaposition of smooth lines and warm materials. Its deep seat perfectly supports the casual recline of the body. Its system of variable lengths and gentle angles allows it to weave through a space with subtle dexterity. It can serve as simple, single sofa or large-scale organizing principle in an open space.

Zinta is comprised of wood shell lined in pads for contract or cushions for a more accommodating seat in a select group of fabrics. Diverse sizes, materials and fill allow for diverse combinations and applications. Shells are available in oak-effect veneered plywood in the natural, brown and dark brown shades and in white laminate and natural oak laminate. Steel base and aluminum legs are painted in dark grey color. Optional plywood armrests are available. Diverse lengths and angles allow for endless combinations. The Zinta collection is GreenGuard certified.

arper



### Designer

Lievore Altherr Molina, 2014

### Awards

ADI Design Index 2015, Italy

Lievore Altherr Molina was founded by Alberto Lievore, Jeannette Altherr and Manel Molina in 1990. Their humanist design approach is informed by the fundamental desire for pure, beautiful forms derived from the constraints of function, technology and context.

Distinguished by a multi-disciplinary method that engages furniture, interior, product, and package design, their work has been globally exhibited and acknowledged. They are the recipients the prestigious National Design Award (1999) in Spain where they practice and teach extensively.

# Zinta

arper





1

**1 Hotel Hall**  
 Art. 4409, 4404, 4402 Lounge  
 Art. 3000, 3001, 3002 Pix

**2 Lounge Area**  
 Art. 4500 Waiting  
 Art. 5100, 5102 Parentesit

**3 Igualada Leather Clúster**  
**BCN Headquarters**  
 Igualada, Spain  
 Art. 4425, 4424 Lounge  
 Art. 3800 Ply  
 Art. 4104, 4102, 4101 Cushions

arper



2



3





1

**1 Igualada Leather Clúster**  
**BCN Headquarters,**  
**Igualada, Spain**  
Art. 4425, 4422, 4419 Lounge  
Art. 3800 Ply  
Art. 4104, 4102, 4101 Cushions

2 Art. 3001

**3 Private residence**  
**Barcelona, Spain**  
Art. 4421 Longe  
Art. 4104, 4100 Cushions

2



3



- 1 Restaurant  
Art. 4601 Eating  
Art. 2074 Catifa 53
  
- 2 Arper Showroom  
New York, USA  
Art. 4601 Eating  
Art. 3910 Aava  
Art. 0694 Dizzie  
Art. 4100 Cushion



1



2

## Type

## Zinta



1



2



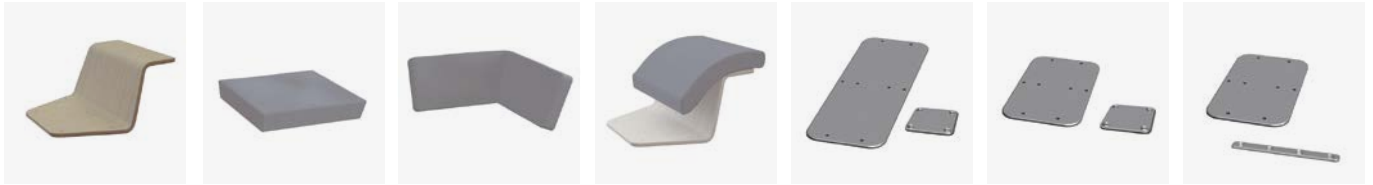
3

### Type

- 1 Lounge
- 2 Waiting
- 3 Eating

arper

## Accessories



1

2

3

4

5

6

7

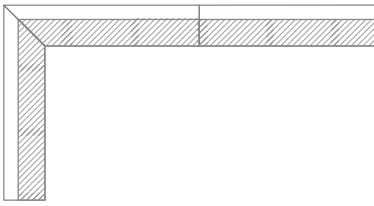


8

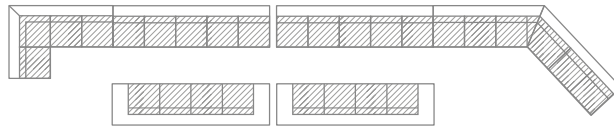
### Accessories

- 1 Armrest (Lounge)
- 2 Seat cushion angle 90° (Lounge)
- 3 Backrest cushion angle 90° (Lounge)
- 4 Armrest cushion (Lounge)
- 5 Link kit for modules Lounge (one kit for two modules)
- 6 Link kit for modules Waiting
- 7 Link kit for modules Eating
- 8 Armrest (Waiting)

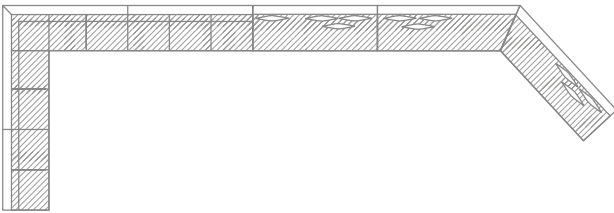
## Composition Examples



1 Eating



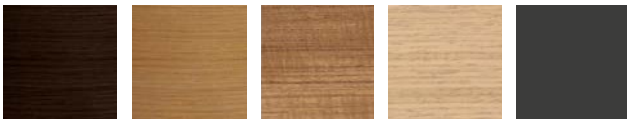
2 Waiting



3 Lounge

arper

## Finishes



L0006

L0022

L0023

LM22

V44

Finishes of seat

L0006 Black  
L0022 — Wood - Natural oak  
L0023 — Teak effect  
LM00022 — Oak effect

Base Finishes

V44 — Matt Anthracite  
powder-coated



---

**Carded In**

Flexibility and versatility are values which we express through a broad range of customization options made available at the design stage. Each product collection can be upholstered with any of the finishes included in our catalog: an extensive choice of different solutions that can be adapted to the needs of any project. We provide samples, tests and certifications, to support our customers throughout the decision process.

**kvadrat**

Availability: Worldwide  
www.kvadrat.dk



Availability: Worldwide  
www.fidivi.com



Availability: USA  
www.ultrafabricsllc.com



Availability: Worldwide  
www.elmoleather.com



Availability: Worldwide  
www.spradling.eu

**maharam**

Availability: USA  
www.maharam.com

**camira**

Availability: Worldwide  
www.camirafabrics.com



Availability: Worldwide  
www.vescom.com

**Soft leather**  
Availability: Worldwide

**Leather Fine**  
Availability: Worldwide

**Leather Keen**  
Availability: Worldwide

---

**Graded In**

The customization options become virtually limitless thanks to the collaboration of internationally renowned partners. Each product collection available in our catalog can now be upholstered with any of the selected upholsteries offered by the manufacturers who have included their fabric and leather products in our collections. Nearly 100 upholstery collections available make countless combinations possible in terms of fabrics, colors, technical specifications and prices.

**kvadrat**

Availability: Worldwide  
www.kvadrat.dk

**Gabriel**

Availability: Worldwide  
www.gabriel.dk

**maharam**

Availability: USA  
www.maharam.com

**Serge Ferrari**

Availability: Worldwide  
www.en.sergeferrari.com

**camira**

Availability: Worldwide  
www.camirafabrics.com

**DESIGN  
TEX**

Availability: USA  
www.designtex.com



Availability: Worldwide  
www.winter-creation.com



Availability: Worldwide  
www.fidivi.com

---

Environmental product certification



PRODUCT CERTIFIED  
FOR LOW CHEMICAL  
EMISSIONS:  
[UL.COM/GG](http://UL.COM/GG)  
UL 2818

## Italy

Arper SPA  
Via Lombardia 16  
31050 Monastier di Treviso (TV)  
Italia  
T +39 0422 7918  
F +39 0422 791800  
info@arper.com  
www.arper.com

Commerciale Italia  
T +39 0422 791905  
F +39 0422 791900  
commerciale@arper.com

Export Office  
T +39 0422 791 907 / 902 / 904 / 905 / 906 /  
909 / 914 / 916 / 917 / 927 / 815 / 872  
F +39 0422 791900  
sales@arper.com

## Subsidiaries and branches

### China

爱尔派 (上海) 家具设计有限公司  
Shanghai — China  
china@arper.com

### Japan

Arper Japan K.K.  
HT Jingu Gaien Bldg.8F  
Minato-ku Kita-Aoyama 2-7-22  
Tokyo 107-0061  
Japan  
T +81 (0)3 5775 0008  
F +81 (0)3 5775 0009  
carejpn@arper.com

### Mexico

Mexico City — Mexico  
T +52 1 55 91 46 33 85  
infolatam@arper.com

### UAE

Arp Middle East  
U-Bora Towers - Unit 1901  
Business Bay  
Dubai  
United Arab Emirates  
T +971 509144800  
infome@arper.com

### USA

Arper USA Inc.  
476 Broadway, Suite 2F  
NY 10013 New York  
T +1 (212) 647 8900  
infousa@arper.com

## UK

Arper UK LTD  
11 Clerkenwell Road  
London EC1M 5PA  
T +44 (0) 20 7253 0009  
london@arper.com

## Singapore

Arper SPA  
c/o 3, #01-01 Lim Teck Kim Rd,  
Genting Centre  
239351 Singapore  
T +65 98348127  
singapore@arper.com

## Sweden

Stockholm — Sweden  
T +46 705 101216  
sweden@arper.com

## Showrooms

Amsterdam — The Netherlands  
Design Post  
Cruquiusweg 111-T  
1019 AG Amsterdam  
T +31 (0)20 7051555  
showroom@beltane.nl

Chicago — USA  
The Merchandise Mart  
Space#346 - 3rd Floor  
Chicago  
T +1 (336) 434 2366  
infousa@arper.com

Cologne — Germany  
Design Post Köln  
Deutz-Mülheimer-Str. 22a  
50679 Cologne  
T +49 221 690 650  
info@designpost.de

Dubai — UAE  
U-Bora Towers - Unit 1901  
Business Bay  
Dubai  
T +971 509144800  
infome@arper.com

London — UK  
11 Clerkenwell Road  
London EC1M 5PA  
T +44 (0) 20 7253 0009  
london@arper.com

Los Angeles — USA  
550 South Hope Street,  
Suite 275  
Los Angeles, CA 90071  
T +1 (336) 434 2382  
infousa@arper.com

Milan — Italy  
Via Pantano 30  
20122 Milan  
T +39 02 89093865  
milano@arper.com

Monastier — Italy  
Via Lombardia 16  
31050 Monastier di Treviso (TV)  
Italia  
T +39 0422 7918  
F +39 0422 791800  
info@arper.com

New York — USA  
476 Broadway, Suite 2F  
NY 10013 New York  
T +1 (212) 647 8900  
infousa@arper.com

Oslo — Norway  
Drammensveien 130  
0277 Oslo  
T +47 908 202226  
norway@arper.com

Tokyo — Japan  
HT Jingu Gaien Bldg.8F  
Minato-ku Kita-Aoyama 2-7-22  
Tokyo 107-0061  
T +81 (0)3 5775 0008  
carejpn@arper.com

## Meeting Hubs

### Belgium

Sint-Jorisstraat 82,  
8730 Beernem  
Belgium  
T + 32 50 705960  
belgium@arper.com

### Germany

Fruchtof München  
2. Innenhof, 2. Etage  
Gotzinger Straße 52b  
D-81371 München  
T +49 171 5548178  
muenchen@arper.com