

HermanMiller
Civic™ Tables



A universal table collection



Civic Tables

Designed by Sam Hecht and Kim Colin

Civic is a comprehensive table collection that lends itself to a wide variety of applications for work, home and hospitality. It includes meeting tables, conference tables, café tables, lounge tables, collaboration tables and side tables, each offering a choice of shapes, colours, materials and finishes.



Inclusive and Inviting

The foundation of Civic is a base design for each table which gives harmony, elegance and coherence to a space, allowing them to be specified across a diverse range of environments. Accompanied by table tops with curved edges and fluid shapes (there are no harsh angles in the range) Civic encourages people to gather round; it's collaboration without hierarchy.

From Modest to Mighty

With Civic style isn't compromised by an increase in scale. From small café tables to conference tables for up to 16 people, Civic's elegant base and sophisticated table tops maintain the same form and function at any size, allowing the same range to be used throughout any environment.



Depending on table shape and size, power can be accessed on the tabletop surface (as shown), or housed in access flaps embedded in the table.



Marble surface with a slim profile edge for a premium finish.

Eclectic Material Expression

While visual harmony is at the heart of Civic, this is coupled with a desire to celebrate the diversity of each client and celebrate the diversity of styles across many spaces. Civic pushes the boundaries of finishes through the introduction of lino, marble and soft-touch surfaces. These premium finishes paired with a slim profile edge can elevate a simple table to one which enhances where people work and meet.

Design Story: Seeking Visual Calm

The modern world offers almost endless possibilities. It was a desire to find some quiet within this noise that drove designers Sam Hecht and Kim Colin to create the Civic Table range. It's an idea that began when they designed their furniture system for collaborative work. "We realised there was a need for tables that could deal with customisation and eclecticism – relevant for unique interiors but made from the same bones" says Hecht. He and Colin developed one table base that works for all uses without compromising function, cost or variety. The Civic family includes small tables for informal settings through to larger scale tables for more formal, conference-style environments. Comprehensive finishes including marble and lino tops allow Civic to have a more premium feel. The integration of power has been thoughtfully considered across the range.



Sam Hecht and Kim Colin

Details and Features



Square edge



Profile edge



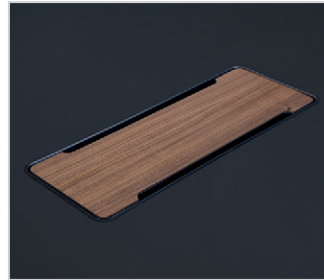
Castor and glide options



A range of heights, including standing height



Table top shapes for any environment



Easy access power options

Statement of Line

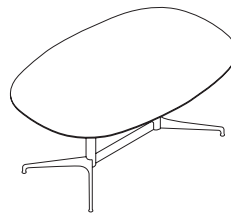
Civic comes in a variety of height, shape, and base configurations, and can be easily customised to address different needs.



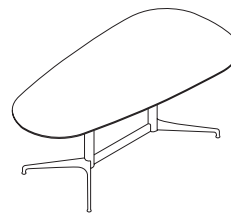
Round



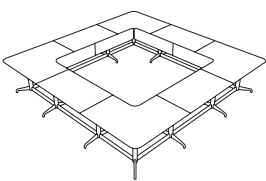
Soft Square



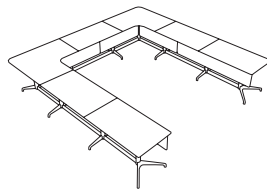
Oval



Trapezoid



O Shape



U Shape

Family Heights


Occasional	400 mm
Lounge	560 mm
Work	740 mm
Counter	900 mm
Standing	1050 mm

Environmental Highlights

Forest Stewardship Council®
PEFC™
SCS Indoor Air Quality™ Indoor Advantage

Certified
Certified
Gold

For more information, please visit hermanmiller.com or call +44 1225 794000.

Herman Miller,  and Civic are among the registered trademarks of Herman Miller, Inc. All other trademarks are the property of their respective owners.

Printed in the UK. Please recycle.
© 2020 Herman Miller, Ltd. PB2373
All rights reserved.