



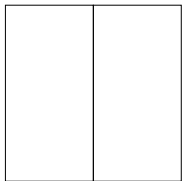
## MOOD SPACES

By connecting multiple mood walls, you can now create large continuous writing surfaces with seamless joints. Every board is magnetic and available in our 24 carefully selected colours. We use tempered low iron glass which eliminates all shades of green and gives the glass optimum finish and colour reproduction. Birch or plexiglass pen trays are sold separately.

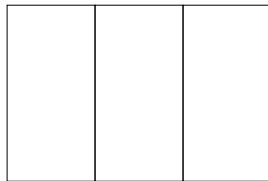
Concealed fittings  
 Depth from wall 12 mm  
 Tempered, low iron glass  
 24 standard colours  
 Magnetic  
 4 mm optic glass

Article number	Name	Size w x h mm	Weight kg
41537Z-2-colour code	Mood Spaces, 2 boards	2000 x 2000	55,5
41537Z-3-colour code	Mood Spaces, 3 boards	3000 x 2000	83,3
41537Z-4-colour code	Mood Spaces, 4 boards	4000 x 2000	112
41537Z-5-colour code	Mood Spaces, 5 boards	5000 x 2000	140

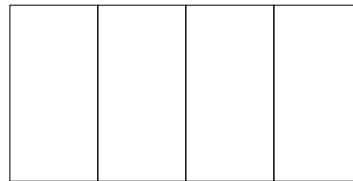
Custom colours available on request



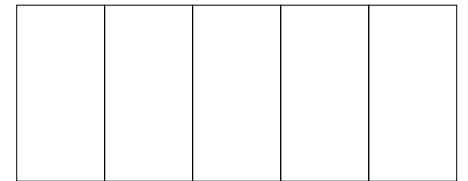
2000x 2000  
41537Z-2



3000 x 2000  
41537Z-3



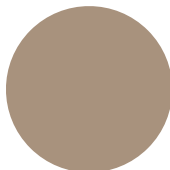
4000 x 2000  
41537Z-4



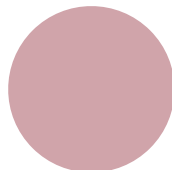
5000 x 2000  
41537Z-5



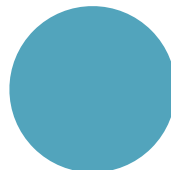
Shy - 120



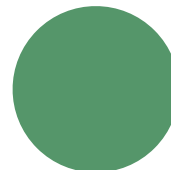
Cozy - 450



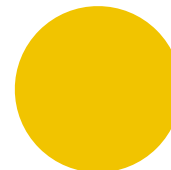
Desirable - 620



Cool - 310



Hopeful - 510



Happy - 700



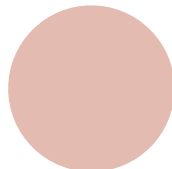
Wild - 660



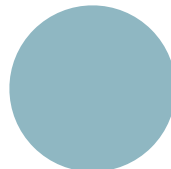
Soft - 150



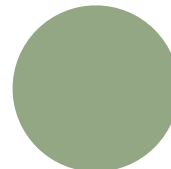
Warm - 160



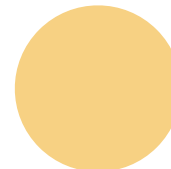
Naive - 640



Calm - 320



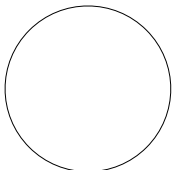
Gentle - 560



Lively - 460



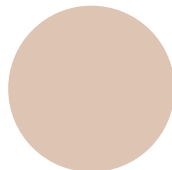
Excited - 420



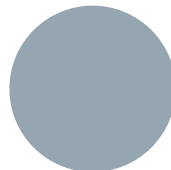
Pure - 130



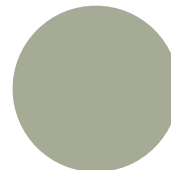
Lazy - 140



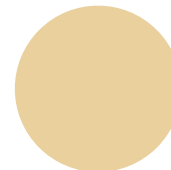
Neat - 650



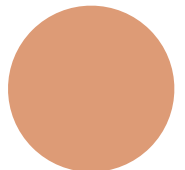
Smooth - 340



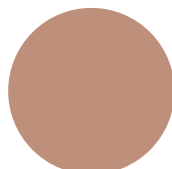
Fair - 550



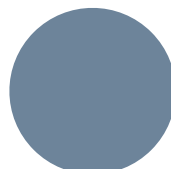
Mellow - 730



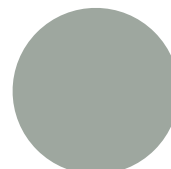
Lush - 470



Innocent - 670



Bold - 330



Frank - 540