



twentytwenty

basics

Contents

Section

Grid Framework

Infills and Accessories

Cupboards

Wood Accessories

Fittings and Brackets

Desk Mounting Panels and Brackets

- TB
- CB
- Picnic
- Splinta Connekt
- Splinta Poseur Connekt

Dimensions

Fabric Bands

Plan Your Own





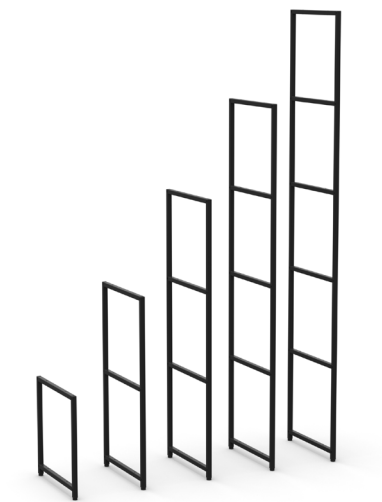
Grid Framework

At the heart of the **twentytwenty** range is the grid. Assembled from a series of intersecting ladders, cross-rails and bridging ladders, the grid can be configured in an infinite number of ways, forming a skeletal structure which can be populated with a host of integrated wooden or steel clip in accessories.

Ladders

Fully welded vertical Ladder with levelling feet. Supplied with connecting pins.

TT-LAD-04	Ladder 455mm High (1 tier)	
TT-LAD-08	Ladder 855mm High (2 tier)	
TT-LAD-12	Ladder 1255mm High (3 tier)	
TT-LAD-16	Ladder 1655mm High (4 tier)	
TT-LAD-20	Ladder 2055mm High (5 tier)	



Cross Rails

Horizontal Cross Rails, for linking Ladders. Supplied in pairs.

TT-RAIL-04-PR	Cross Rail 400mm - Pair	
TT-RAIL-08-PR	Cross Rail 800mm - Pair	
TT-RAIL-12-PR	Cross Rail 1200mm - Pair	



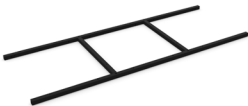
Bridging Ladders

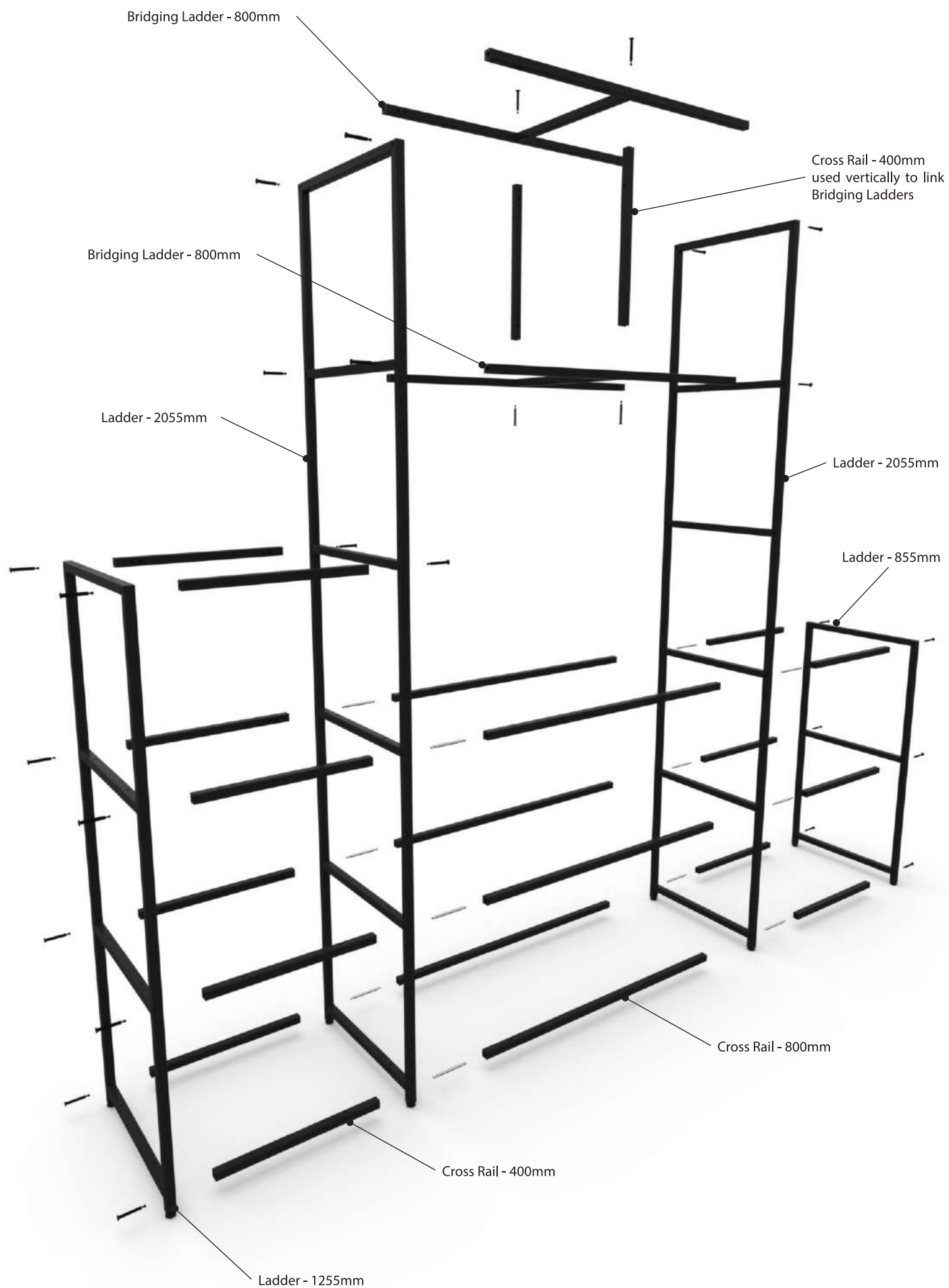
Horizontal Bridging Ladders, for linking Ladders creating open apertures below. Two or more Bridging Ladders can be connected vertically using Cross Rails.

TT-BRI-LAD-08	Bridging Ladder 800mm (can be linked with 1 pair of Cross Rails)	
---------------	--	--



TT-BRI-LAD-12	Bridging Ladder 1200mm (can be linked with 2 pairs of Cross Rails)	
---------------	--	--





Infills and Accessories

Universal Infill Panel

For use horizontally or vertically within apertures in grid framework. Fittings supplied.

TT-UIP-44-SGL	Universal Infill Panel 400x400 (379x379mm) - Single	
TT-UIP-84-SGL	Universal Infill Panel 800x400 (779x379mm) - Single	
TT-UIP-124-SGL	Universal Infill Panel 1200x400 (1179x379mm) - Single	
TT-UIP-44-PR	Universal Infill Panel 400x400 (379x379mm) - Pair	
TT-UIP-84-PR	Universal Infill Panel 800x400 (779x379mm) - Pair	
TT-UIP-124-PR	Universal Infill Panel 1200x400 (1179x379mm) - Pair	



Fabric Infill Panels

For use vertically between horizontal rails or ladders. Supplied with 4qty single and 4qty double fixing pins.

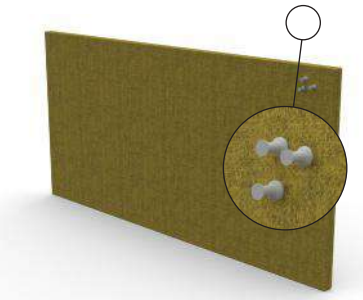
TT-FAB-0404	Fabric Panel 400x400 (379x379mm)	
TT-FAB-0804	Fabric Panel 800x400 (779x379mm)	
TT-FAB-0808	Fabric Panel 800x800 (779x779mm)	
TT-FAB-1208	Fabric Panel 1200x800 (1179x779mm)	



Pinnable Fabric Infill Panels

For use vertically between horizontal rails. Supplied with 4qty single and 4qty double fixing pins.

TT-FAB-PIN-0404	Pinnable Fabric Panel 400x400 (379x379mm)	
TT-FAB-PIN-0804	Pinnable Fabric Division Panel 800x400 (779x379mm)	
TT-FAB-PIN-0808	Pinnable Fabric Panel 800x800 (779x379mm)	
TT-FAB-PIN-1208	Pinnable Fabric Panel 1200x800 (1179x779mm)	



Planter Boxes

For use in co-ordinating apertures in grid framework (i.e. 400x400 Box with 400 aperture) - not water tight.

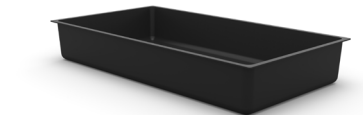
TT-BOX-ON44	Planter Box 400x400 (379x420mm)	
TT-BOX-ON84	Planter Box 800x400 (779x420mm)	

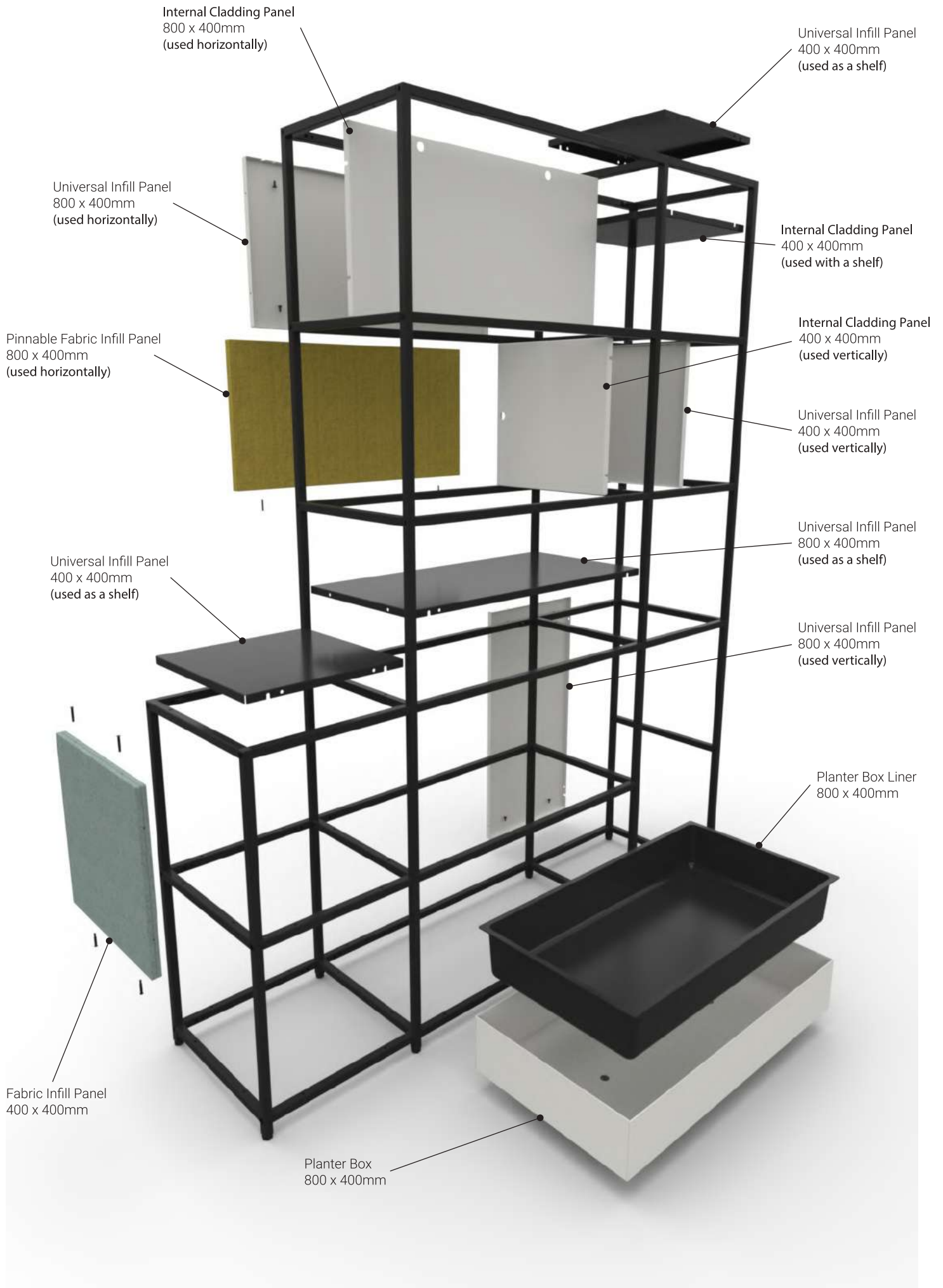


Planter Box Liners

For use within equivalent size planter box to create a water tight, lined planter box.

TT-BOX-LNR-44	Planter Box Liner 400x400	
TT-BOX-LNR-84	Planter Box Liner 800x400	



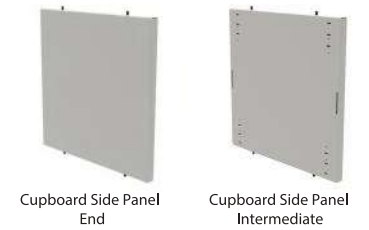


Cupboards

Cupboard Side Panels

Side Panels for mounting doors. Fits within Ladder apertures. Fittings supplied. Sold as singles.

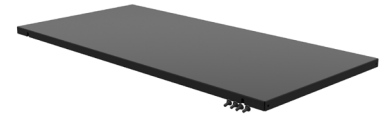
TT-CUP-SIDE-END	Cupboard Side Panel 400x400 (379x379mm) - End hinges mount to one side only - use at the end of cupboards	
TT-CUP-SIDE-INT	Cupboard Side Panel 400x400 (379x379mm) - Intermediate hinges mount to both sides - share panel between cupboards	



Cupboard Top Panel

Top Panel for cupboards, includes push release mechanism.

TT-CUP-TOP-44	Cupboard Top Panel 400x400 (379x379mm)	
TT-CUP-TOP-84	Cupboard Top Panel 800x400 (779x379mm)	



Universal Infill Panel

For use horizontally or vertically within apertures in grid framework. Fittings supplied.

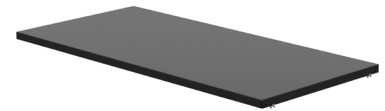
TT-UIP-44-SGL	Universal Infill Panel 400x400 (379x379mm) - Single	
TT-UIP-84-SGL	Universal Infill Panel 800x400 (779x379mm) - Single	
TT-UIP-44-PR	Universal Infill Panel 400x400 (379x379mm) - Pair	
TT-UIP-84-PR	Universal Infill Panel 800x400 (779x379mm) - Pair	



Cupboard Shelf

Adjustable Shelf for use within cupboards. Shelf brackets supplied.

TT-CUP-SHLF-44	Cupboard Shelf 400x400 - Single	
TT-CUP-SHLF-84	Cupboard Shelf 800x400 - Single	

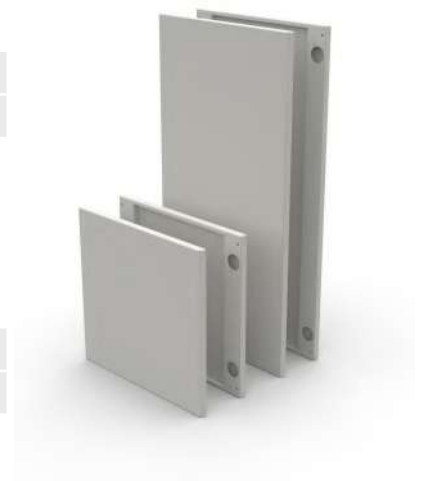


Cupboard Doors

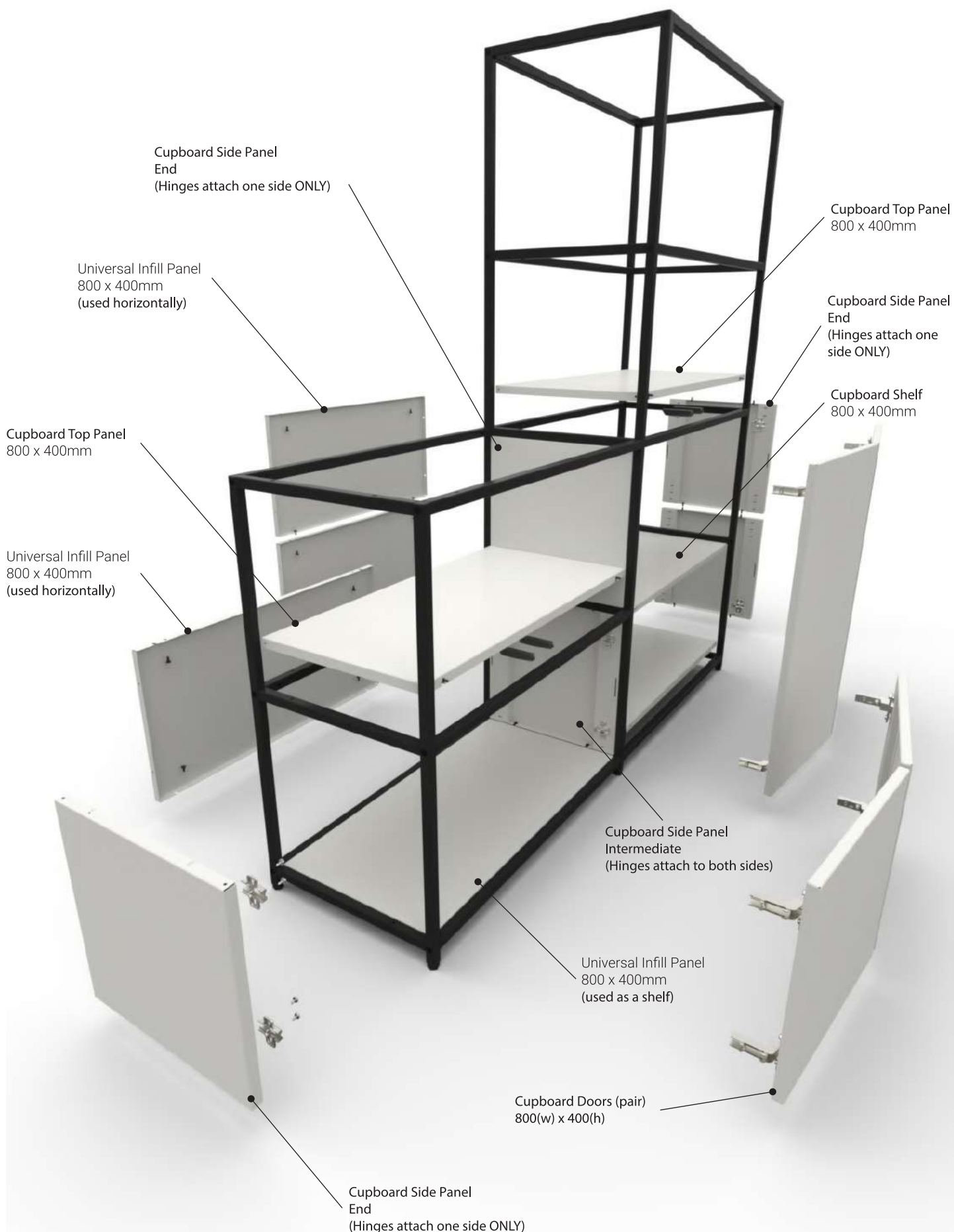
Non-locking, push release (handle-less) doors. Order hinge kits separately.

TT-CUP-DOOR-44S	Single Door 400(w)x400(h) - Single	
TT-CUP-DOOR-48S	Single Door 400(w)x800(h) - Single	

TT-CUP-DOOR-44D	Double Door 400(w)x400(h) - Pair	
TT-CUP-DOOR-48D	Double Door 400(w)x800(h) - Pair	



NOTE: All steel panels can be replicated in wood.



Wood Accessories

Inset Shelves

TT-SHLF-IN04	Inset Shelf 400x400 mm (379x379)	
TT-SHLF-IN08	Inset Shelf 800x400 mm (779x379)	



Sit-On Shelves

TT-SHLF-SO04	Sit-On Shelf 400x400 mm (379x415)	
TT-SHLF-SO08	Sit-On Shelf 800x400 mm (779x415)	



Shelves

Shelves can be designed to fit the twentytwenty range in two ways, inset (flush between the horizontal rails) or sit-on (sat on top of the horizontal rails). Each style of shelf has its own merits and your choice is largely dependant on aesthetic preference.

The Inset shelf design is ideally attached to the framework using Rafix Connectors and Rafix M6 Connecting Bolt. These should be installed at 280mm centres (for shelf between 400 (380mm) Rails) or 680mm (for shelf between 800 (780mm) Rails). These fittings allow the shelf to be lowered into place between the rails and ‘snap’ into place providing a secure shelf solution.

Sit-On shelves can be attached in a range of ways and the final decision is dependant on the customers requirements. Racks preferred method requires 4qty modesty blocks, fixed to the underside of the shelf so that they sit between the rails. This provides an effective mounting method that prevents the shelf from moving; but allows them to be re-positioned easily, without tools. M6 Holes are also accessible on the upper face of the horizontal rails at 220mm (for shelf on top of 400 (380mm) Rails) or 620mm (for shelf on top of 800 (780mm) Rails). Fitting shelves using this method will leave a 21mm gap between adjacent shelves.



Inset Shelves



Sit-On Shelves

Divisions

Divisions can be designed to fit the twentytwenty range in two ways, both designs sit flush between the framework, however the method of attachment can be different. Each style of shelf has its own merits and your choice is largely dependant on aesthetic preference.

The Rafix Division design is attached to the framework using Rafix Connectors and Rafix M6 Connecting Bolt from. These should be installed at 220mm centres (for Division between 400 (380mm) Rails) or 620mm (for Division between 800 (780mm) Rails). These fittings allow the shelf to be pushed into place between the rails and are secured with a screwdriver, providing a secure division panel that cannot be easily removed.

The Pin Kit Division design utilises the fabric division panel pins to attach to the framework. These pass through the horizontal rails and into 5mm holes in the face of the top and bottom edges of the division panels. This provides a secure fitting, preventing the Division panels from moving within the frame. If stacking divisions either side of horizontal rails, this method requires a progressive build. Starting at the top or bottom of a run of panels, single pins should be used from for the first panel edge, with double pins used in locations where panels stack above and below a horizontal rail.



Divisions - RAFIX



Divisions - Pins

Wood Accessories

Divisions - Rafix

TT-DIV-RA0404	Divisions - RAFIX 400x400 mm (379x379)	
TT-DIV-RA0408	Divisions - RAFIX 400x800 mm (379x779)	
TT-DIV-RA0804	Divisions - RAFIX 800x400 mm (779x379)	
TT-DIV-RA0808	Divisions - RAFIX 800x800 mm (779x779)	



Divisions - Pins

TT-DIV-PI0404	Divisions - RAFIX 400x400 mm (379x379)	
TT-DIV-PI0408	Divisions - RAFIX 400x800 mm (379x779)	
TT-DIV-PI0804	Divisions - RAFIX 800x400 mm (779x379)	
TT-DIV-PI0808	Divisions - RAFIX 800x800 mm (779x779)	



Wood Accessories

Doors - Single

TT-DOOR-W44	Single door 400x400 mm (375x376) - Single	
TT-DOOR-W48	Single door 400x800 mm (775x376) - Single	



Doors - Double door

TT-DOOR-W84	Double door 400x400 mm (375x387) to suit opening 780x380 - Pair	
TT-DOOR-W48	Double door 400x800 mm (775x387) to suit opening 780x780 - Pair	



Doors - Side Panel

TT-DIV-DOORS	Side panel for doors 400x400 mm (379x379)	
--------------	---	--



Doors

Wooden doors can be added to the twentytwenty range in place of the Rack manufactured steel versions. The doors shown here are designed to sit inset within the frame using the 110° inset hinge and the 3mm mounting plate. As standard the steel doors in the range are supplied with a touch release catch to open the doors.



Wood Accessories

TT-CUBBY-4040	Cubby Unit 400x400 mm (380x380)	
TT-CUBBY-4080	Cubby Unit 400x800 mm (380x780)	
TT-CUBBY-8040	Cubby Unit 800x400 mm (780x380)	
TT-CUBBY-8080	Cubby Unit 800x800 mm (780x780)	



Cubby Units

A range of Cubby Units, in different sizes, compliment the range beautifully, offering an enclosed shelving solution with a contrast to the rigid structure of the framework. The design of this unit utilises the fabric division panel pins to attach to the framework. These pass through the horizontal rails and into 5mm holes in the face of the top and bottom panels. This provides a secure fitting, prevent the cubby units from moving within the frame.

Construction

The construction of this unit is via 50mm Confirmat Screws. Once installed these fittings are effectively concealed giving a clean, minimal aesthetic.

The range of apertures that can be created within the framework are as follows:

- 380x380mm
- 380x780mm
- 780x380mm
- 780x780mm

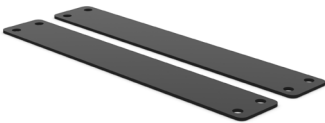


Fittings and Brackets

Return Bracket

For linking one configuration to another. Can be used in-line or at 90°. Supplied as a pair.

TT-RTRN-BRKT	Return Bracket Kit (pair)	
One pair of return brackets recommended per connection. Brackets attach to the underside of horizontal rails.		



Wall Kit

For attaching a configuration to a wall (wall fixings not supplied).

TT-WALL-BRKT	Wall Bracket Kit	
One pair of wall brackets recommended per configuration. Brackets are intended as 'anti-topple' devices only.		



Pin Kit

Pin Kit for attaching customer manufactured cubby units and division panels

TT-PIN-KIT	Panel Pin Kit (bag of 4 single and 4 double pins)	
Used to secure panels in place within framework apertures		

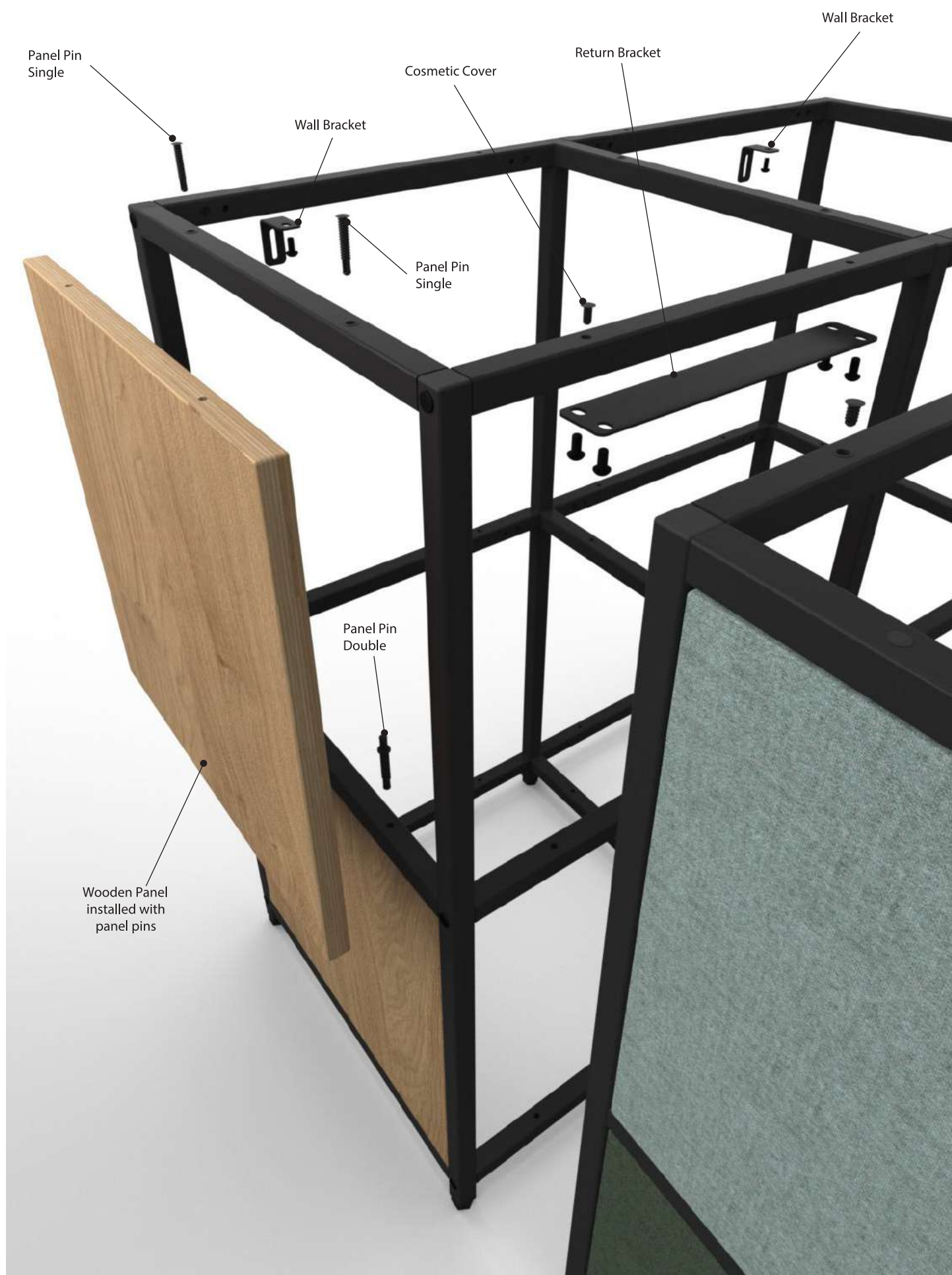


Cosmetic Kit

Kit of cover caps for M6 Horizontal Rail and End Ladder apertures

TT-COSM-KIT-BK	Cosmetic Cover Kit (20 M6 covers (black), 10 end ladder plugs (black))	
TT-COSM-KIT-WH	Cosmetic Cover Kit (20 M6 covers (white),10 end ladder plugs (black))	
Used to fill unused holes in framework		



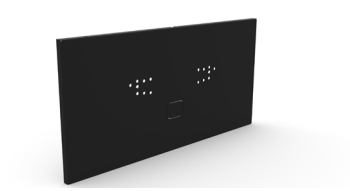


Desk Mounting Panels and Brackets - TB Bench

Desk Mounting Panel

Provides a fixing point for desk frames when used with relevant mounting brackets.

TT-DESK-PNL-84	Desk Mounting Panel - 800x400	
TT-DESK-PNL-124	Desk Mounting Panel - 1200x400	



600 Deep Desks - Mounting Brackets

Requires: 1qty TT-DESK-TB-600 & 1qty TT-DESK-PNL-84

TT-DESK-TB-600	600mm(d) Desk Mounting Bracket for TB Range (720 & 740mm high)	
----------------	--	--



800 Deep Desks - Mounting Brackets

Requires: 1qty TT-DESK-TB-800 & 1qty TT-DESK-PNL-84

TT-DESK-TB-800	800mm(d) Desk Mounting Bracket for TB Range (720 & 740mm high)	
----------------	--	--



1200 Deep Desks - Mounting Brackets

Requires: 2qty TT-DESK-TB-600 & 1qty TT-DESK-PNL-124

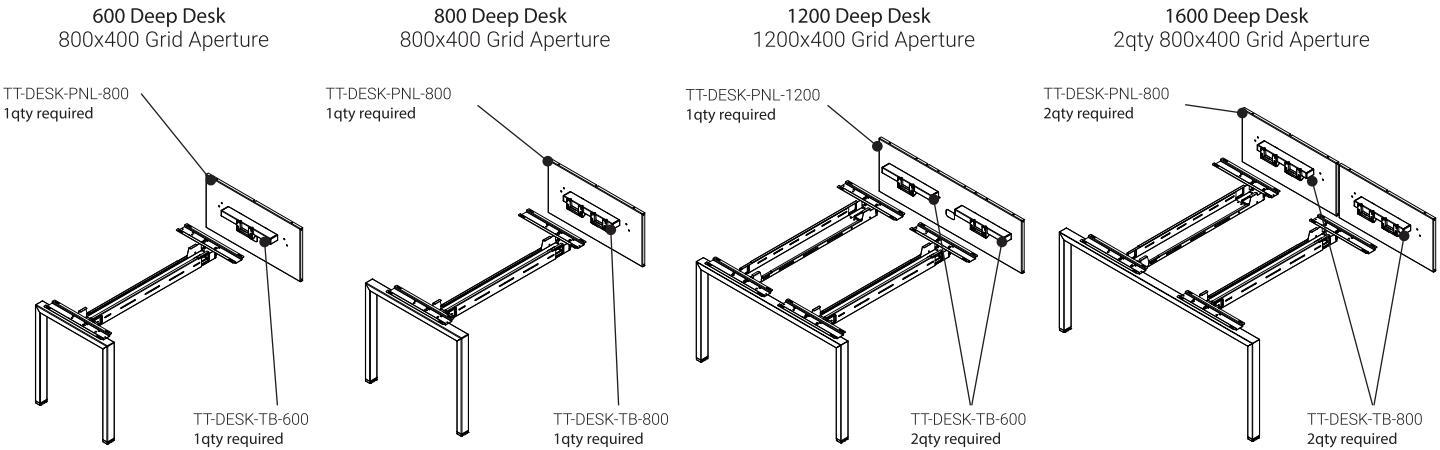
TT-DESK-TB-600	600mm(d) Desk Mounting Bracket for TB Range (720 & 740mm high)	
----------------	--	--

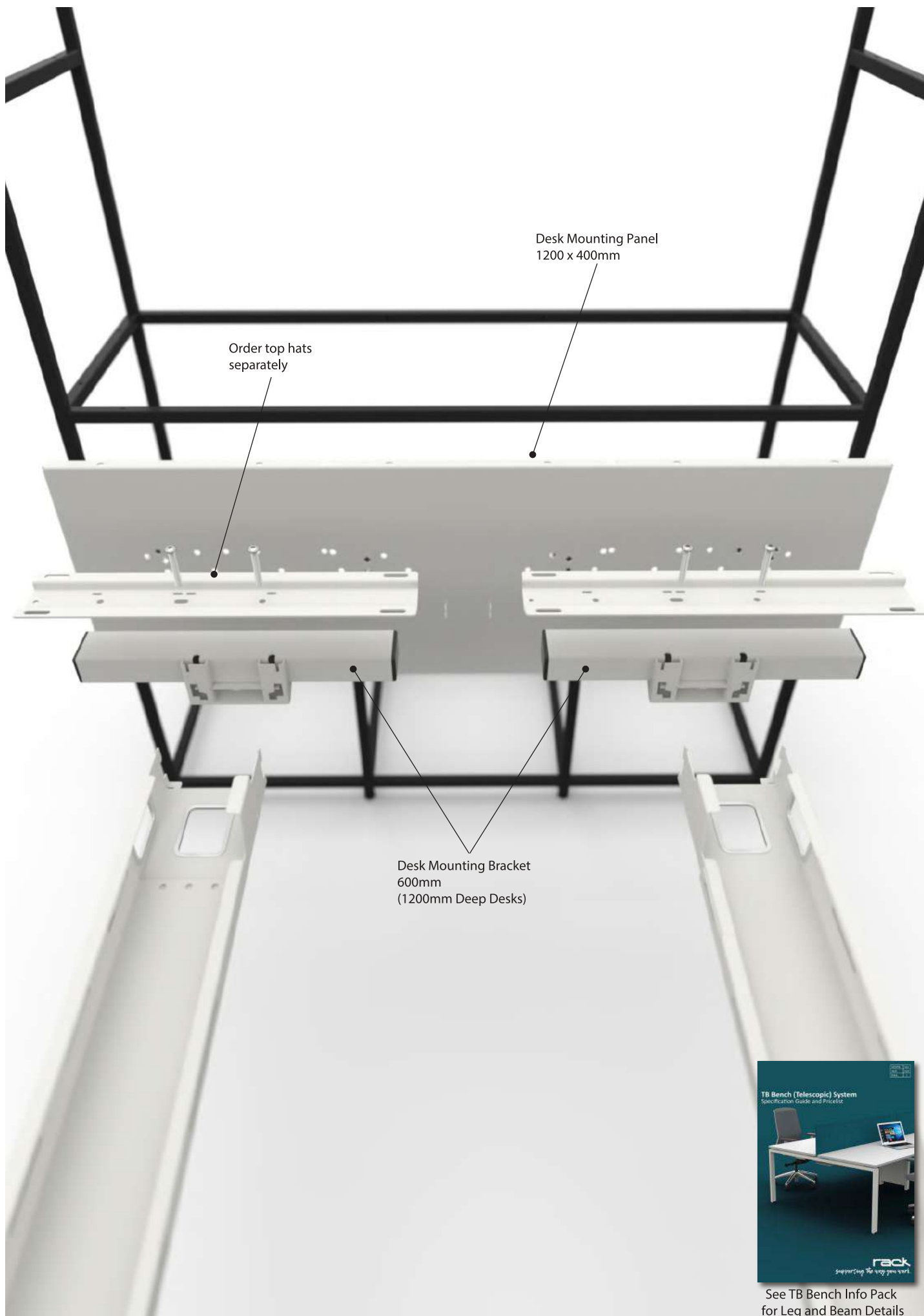


1600 Deep Desks - Mounting Brackets

Requires: 2qty TT-DESK-TB-800 & 2qty TT-DESK-PNL-84

TT-DESK-TB-800	800mm(d) Desk Mounting Bracket for TB Range (720 & 740mm high)	
----------------	--	--



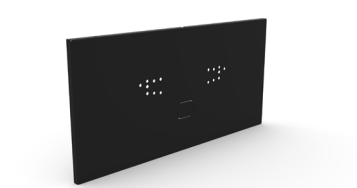


Desk Mounting Panels and Brackets - CB Bench

Desk Mounting Panel

Provides a fixing point for desk frames when used with relevant mounting brackets.

TT-DESK-PNL-84	Desk Mounting Panel - 800x400	
TT-DESK-PNL-124	Desk Mounting Panel - 1200x400	



600 Deep Desks - Mounting Brackets

Requires: 1qty TT-DESK-CB-600 & 1qty TT-DESK-PNL-84

TT-DESK-CB-600	600mm(d) Desk Mounting Bracket for CB Range	
----------------	---	--



800 Deep Desks - Mounting Brackets

Requires: 1qty TT-DESK-CB-800 & 1qty TT-DESK-PNL-84

TT-DESK-CB-800	800mm(d) Desk Mounting Bracket for CB Range	
----------------	---	--



1200 Deep Desks - Mounting Brackets

Requires: 2qty TT-DESK-CB-600 & 1qty TT-DESK-PNL-124

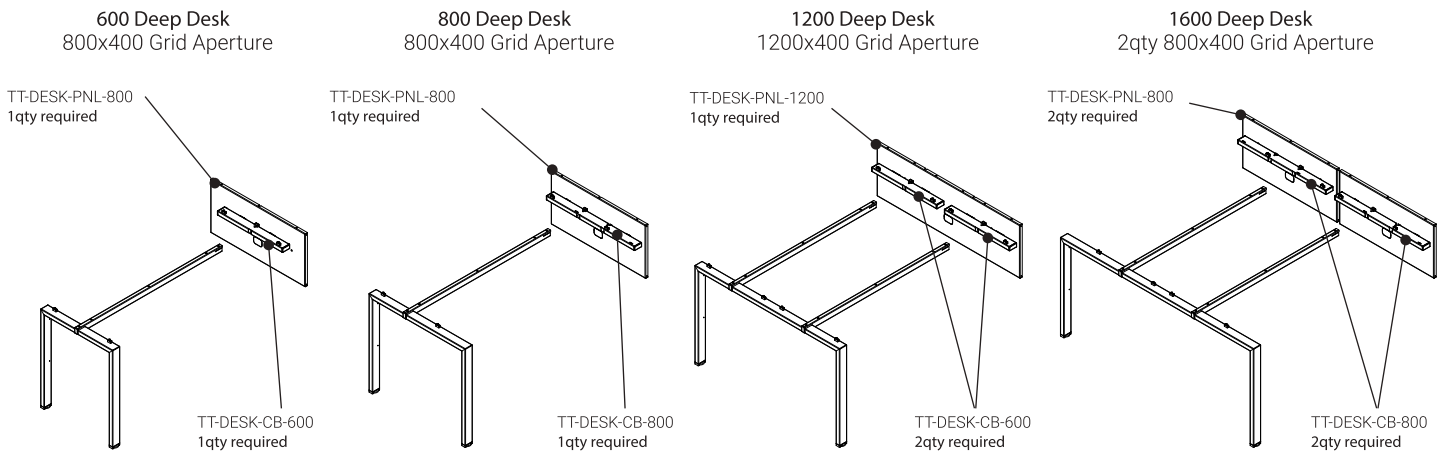
TT-DESK-CB-600	600mm(d) Desk Mounting Bracket for CB Range	
----------------	---	--



1600 Deep Desks - Mounting Brackets

Requires: 2qty TT-DESK-CB-800 & 2qty TT-DESK-PNL-84

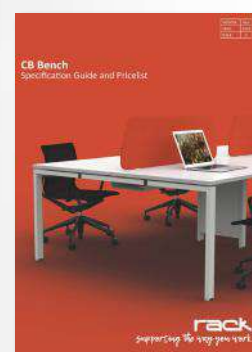
TT-DESK-CB-800	800mm(d) Desk Mounting Bracket for CB Range	
----------------	---	--





Desk Mounting Bracket
800mm
(800mm Deep Desks)

Desk Mounting Panel
800 x 400mm



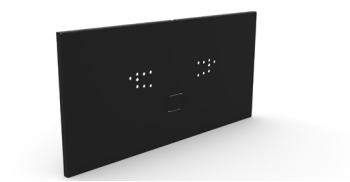
See CB Bench Info Pack
for Leg and Beam Details

Desk Mounting Panels and Brackets - Picnic Table

Desk Mounting Panel

Provides a fixing point for desk frames when used with relevant mounting brackets.

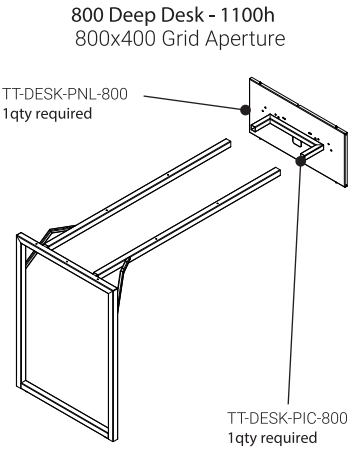
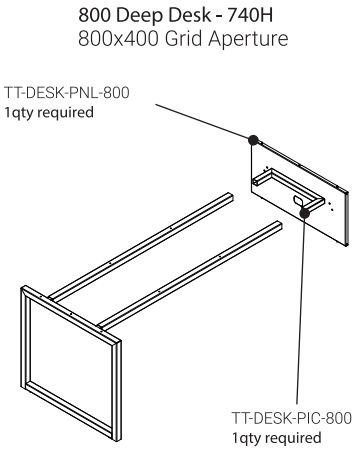
TT-DESK-PNL-84	Desk Mounting Panel - 800x400	
----------------	-------------------------------	--



800 Deep Desks - Mounting Brackets

Requires: 1qty TT-DESK-PIC-800 & 1qty TT-DESK-PNL-84

TT-DESK-PIC	800mm(d) Desk Mounting Bracket for Picnic Range (Table & Poseur)	
-------------	--	--

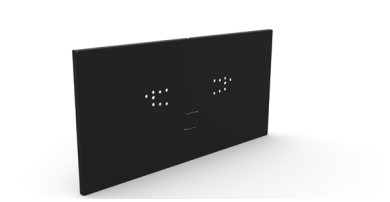


Desk Mounting Panels and Brackets - Splinta Connekt Table

Desk Mounting Panel

Provides a fixing point for desk frames when used with relevant mounting brackets.

TT-DESK-PNL-84	Desk Mounting Panel - 800x400	
TT-DESK-PNL-124	Desk Mounting Panel - 1200x400	



800 Deep Desks - Mounting Brackets

Requires: 2qty TT-DESK-SPL-CON & 1qty TT-DESK-PNL-84

TT-DESK-SPL-CON	Desk Mounting Bracket for Splinta Connekt Range	
-----------------	---	--

1000 Deep Desks - Mounting Brackets

Requires: 2qty TT-DESK-SPL-CON & 1qty TT-DESK-PNL-124

TT-DESK-SPL-CON	Desk Mounting Bracket for Splinta Connekt Range	
-----------------	---	--

1200 Deep Desks - Mounting Brackets

Requires: 2qty TT-DESK-SPL-CON & 1qty TT-DESK-PNL-124

TT-DESK-SPL-CON	Desk Mounting Bracket for Splinta Connekt Range	
-----------------	---	--

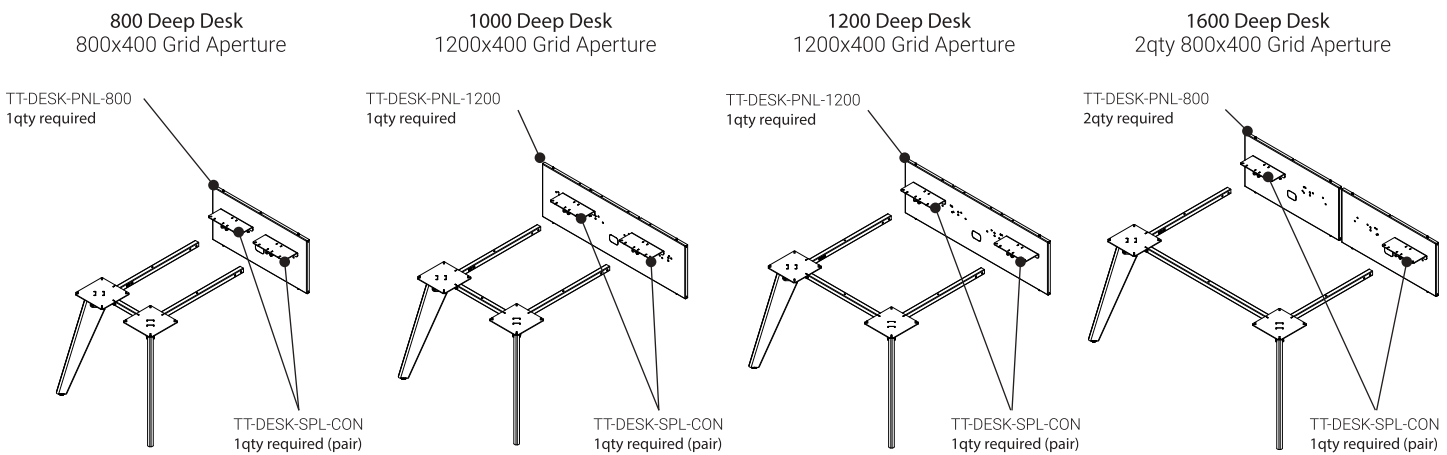


1600 Deep Desks - Mounting Brackets

Requires: 2qty TT-DESK-SPL-CON & 2qty TT-DESK-PNL-84

TT-DESK-SPL-CON	Desk Mounting Bracket for Splinta Connekt Range	
-----------------	---	--

NOTE: When ordering Splinta Connekt Rails please use the 'Corner to Inter Top Size' i.e. 1600mm desktop requires 1800 rails (SP-SPC-RAIL-18).



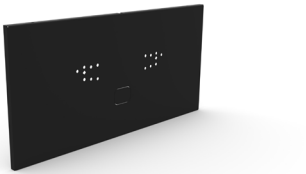


See Splinta Connekt
Info Pack for Leg and
Beam Details

Desk Mounting Panels and Brackets - Splinta Poseur Connekt

Desk Mounting Panel

Provides a fixing point for desk frames when used with relevant mounting brackets.



TT-DESK-PNL-84	Desk Mounting Panel - 800x400	
TT-DESK-PNL-124	Desk Mounting Panel - 1200x400	
TT-FOOT-PNL-84	Foot Rail Mounting Panel - 800x400	
TT-FOOT-PNL-124	Foot Rail Mounting Panel - 1200x400	

800 Deep Desks - Mounting Brackets

Requires: 2qty TT-DESK-SPL-POS, 1qty TT-DESK-PNL-84 & 1qty TT-FOOT-PNL-84

TT-DESK-SPL-POS	Desk Mounting Bracket Set for Splinta Poseur Connekt	
-----------------	--	--

1000 Deep Desks - Mounting Brackets

Requires: 2qty TT-DESK-SPL-POS, 1qty TT-DESK-PNL-124 & 1qty TT-FOOT-PNL-124

TT-DESK-SPL-POS	Desk Mounting Bracket for Splinta Poseur Connekt	
-----------------	--	--



1200 Deep Desks - Mounting Brackets

Requires: 2qty TT-DESK-SPL-POS, 1qty TT-DESK-PNL-124 & 1qty TT-FOOT-PNL-124

TT-DESK-SPL-POS	Desk Mounting Bracket for Splinta Poseur Connekt	
-----------------	--	--

NOTE: When ordering Splinta Poseur Connekt Top Rails please use the ‘Corner to Corner Top Size’ and order Rails 200mm longer than top i.e. 1600mm desktop requires 1800 rails (SP-SPP-TR-18).
When ordering Splinta Poseur Connekt Foot Rails please use the ‘Corner to Corner Top Size’ and order Rails 200mm longer than top i.e. 1600mm desktop requires 1800 rails (SP-SPP-FR-A18).

