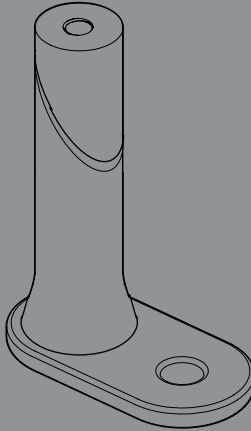


- INSTRUCTION MANUAL -

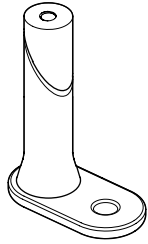
PALISSADE

FIXATION BRACKET



HAY

- PARTS -



A Fixation bracket



B Allen key x1

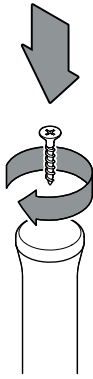


C Thicker O-ring

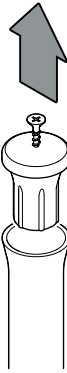


D Thinner O-ring
(only for Palissade Park
Dining Bench)

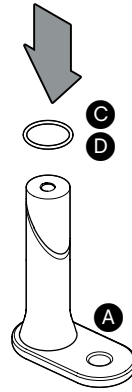
- INSTRUCTION -



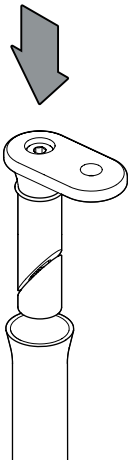
1. Screw a self-tapping screw into the existing glider.



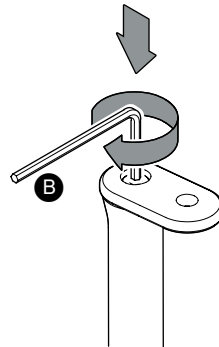
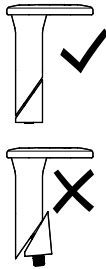
2. Take hold of the screw and pull the glider out.



3. Mount the O-ring.
Use **D** for Palissade Park Dining Bench and **C** for all other Palissade models.



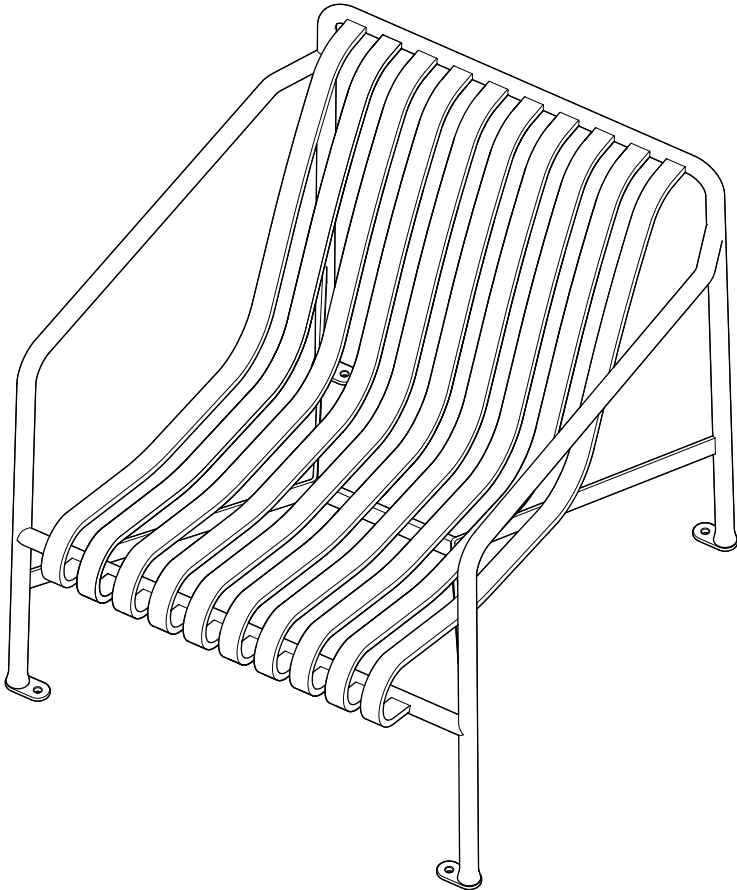
4. Insert the fixation bracket into the leg. Make sure the screw is untightened.



5. Tighten the screw with the Allen key. Make sure the fixation bracket is fully pushed down, leaving no gap between the leg and the fixation bracket.

6.

Repeat the process for all four legs and then secure it to the floor/ground with suitable screws.



- CARE & MAINTENANCE -

Our Care & Maintenance offers guidance for optimal maintenance of your HAY product. It includes advice and instructions on cleaning and caring for specific materials to prolong the life of your furniture.



Please find our Care & Maintenance guide by scanning the QR code



You can find more relevant information on Palissade Collection by scanning the QR code

You can also find the same information here
hay.dk/downloads

Havnen 1 8700 Horsens Denmark
+45 4282 0282 / hay@hay.com

01/10/2021

HAY