



Zeph by Herman
Miller®

**Zeph by
Herman
Miller[®]**

**A classic
silhouette with
contemporary
ergonomics**

Designed by Studio 7.5

The Zeph Chair finds a happy home between mid-century modern aesthetics and the research-backed ergonomics of today's work chairs. The advanced yet simple design offers more for less – more comfort, colours and style – made using fewer components.

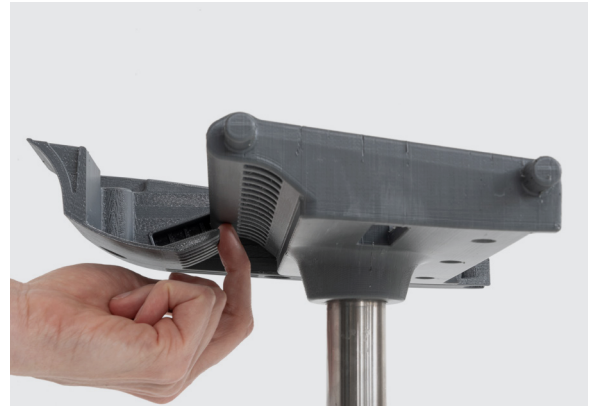


Zeph's geometry allows your body's pivot points to create the proper counterbalance for a comfortable, energising and ergonomic sitting experience.

Move with the kinematic monoshell

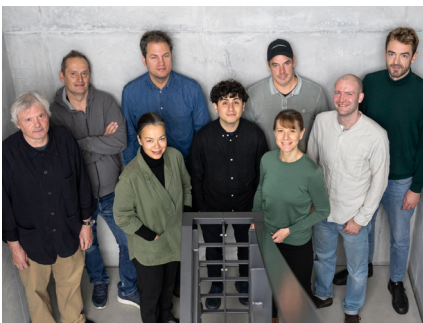
Setting out to animate a shell chair – not an easy feat – the designers at Studio 7.5 used 3D printing to iterate through prototypes of the monoshell until they achieved what they deem a gold standard in ergonomics: a recline that feels natural in a chair that moves with you. The geometry of the design allows your body's pivot points to create the right counterbalance for a proper ergonomic sit – an experience that leaves you feeling supported and energised as you move in the chair, and about your day.





Design

Berlin-based Studio 7.5 found the initial inspiration for the Zeph Chair with the help of the students at the universities where they teach. Eventually, their iterative design process led to a chair that doesn't compromise on comfort or style, and one that bridges the gap between Herman Miller's iconic mid-century designs and the ergonomics of today's work chairs.



Studio 7.5

About Studio 7.5

When Burkhard Schmitz and Carola Zwick started their design studio as a team of six in 1992, they were looking for the freedom to work on projects that interested them. And for the freedom from bosses and titles. "Everybody does everything," says Schmitz, speaking for the group that also includes Carola's brother, Roland Zwick. "That's how we cultivate ideas and maintain our openness and curiosity."

They find designing office chairs to be most rewarding and have worked with Herman Miller on the Setu Chair, the award-winning Mirra Chair, Mirra 2 and Cosm. "We define not only how the chair looks but how it performs," Carola says. As to how these chairs perform for you, they provide comfort no matter how or where you sit.



Mix and match from Zeph's joyful seven-colour palette.

Find joy in colour

The playful seven-colour palette for the Zeph Chair's shell and base was designed to complement and enliven the home, office, university campus or anywhere in between – allowing you to get creative in pairing the chair with your unique sense of style. Enjoy the return of dipped-in-colour, one hue from top to bottom, which debuted on Zeph predecessor Cosm.

Change it up with 3D Knit

The chair's optional, removable and interchangeable 3D Knit easily slides directly into the shell, no tools required, and can be swapped out for one of the other 20 textile colour choices if your space needs a refresh. Plus, it's made from 50% post-consumer recycled content, and because it's knitted to the chair's exact dimensions, there's zero fabric waste.



The 3D Knit is made from 50 per cent post-consumer recycled content in a production process that results in zero fabric waste.



Materials

Full Colour Finish



Black
BK



Carbon
CRB



Alpine
ZM



Cocoa
CC1



Olive
OLF



Nightfall
DN2

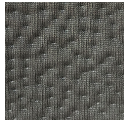


Glacier
DB3

3D Knit Seat Splash Price Band 1



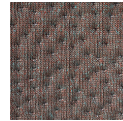
Black
5H101



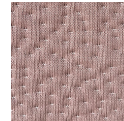
Carbon
5H102



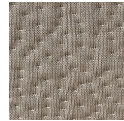
Alpine
5H103



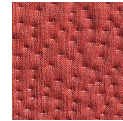
Silt
5H104



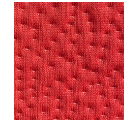
Tea Rose
5H105



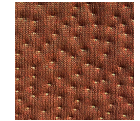
Cocoa
5H106



Persimmon
5H107



Blaze
5H108



Cayenne
5H109



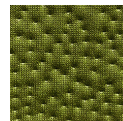
Falcon
5H110



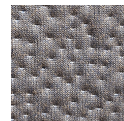
Mustard Seed
5H111



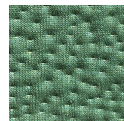
Patina
5H112



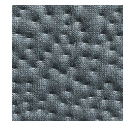
Olive
5H113



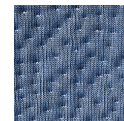
Moss
5H114



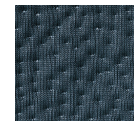
Aloe
5H115



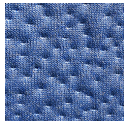
Glacier
5H116



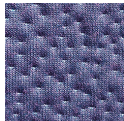
Ultramarine
5H117



Nightfall
5H118



Bluebell
5H119



Boysenberry
5H120

3D Knit Unibody Ripple Price Band 1



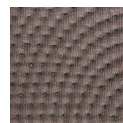
Black
5H201



Carbon
5H202



Alpine
5H203



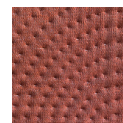
Silt
5H204



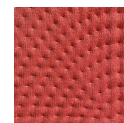
Tea Rose
5H205



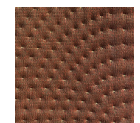
Cocoa
5H206



Persimmon
5H207



Blaze
5H208



Cayenne
5H209



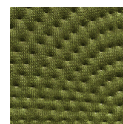
Falcon
5H210



Mustard Seed
5H211



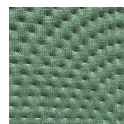
Patina
5H212



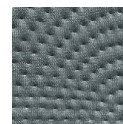
Olive
5H213



Moss
5H214



Aloe
5H215



Glacier
5H216



Ultramarine
5H217



Nightfall
5H218



Bluebell
5H219



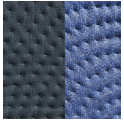
Boysenberry
5H220

Front/Back colour

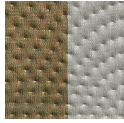
3D Knit Unibody Two-Tone

Ripple

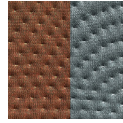
Price Band 1



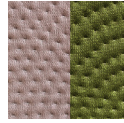
Nightfall/
Bluebell
5H221



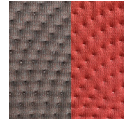
Patina/
Alpine
5H222



Cayenne/
Glacier
5H223



Tea Rose/
Olive
5H224



Silt/
Blaze
5H225

Specs

Family

Multipurpose Chair
Side Chair
Stool

Overview

Maximum User Weight 350 lbs/158.7 kg

Seat Height

Multipurpose Chair 371–513 mm
Side Chair 465–468 mm
Stool 614.7–815.3 mm

Arm Options

No Arms
Fixed Arms

Environmental Highlights

Recyclability Up to 99%
BIFMA level 3
SCS Indoor Advantage Gold
Declare Label



**For more information, please visit
hermanmiller.com**

Herman Miller, the Herman Miller logo, Zeph, Zeph by Herman Miller, Mirra, Mirra 2, Setu and Cosm are among the registered trademarks of MillerKnoll and its subsidiaries. All other trademarks are the property of their respective owners.

© 2024 MillerKnoll
All rights reserved.